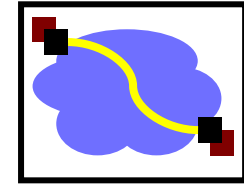
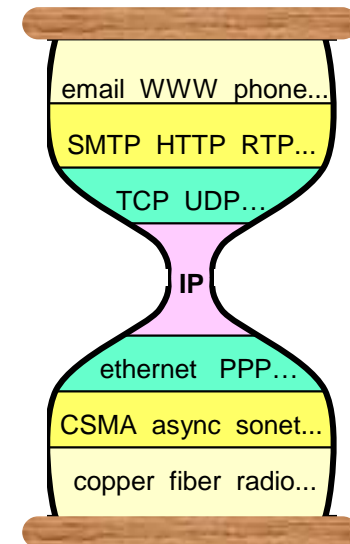


Internet Protocol (IP)



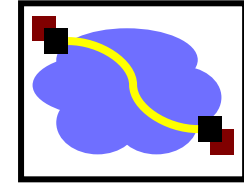
- Hour Glass Model
 - Create abstraction layer that hides underlying technology from network application software
 - Make as minimal as possible
 - Allows range of current & future technologies
 - Can support many different types of applications

Network applications

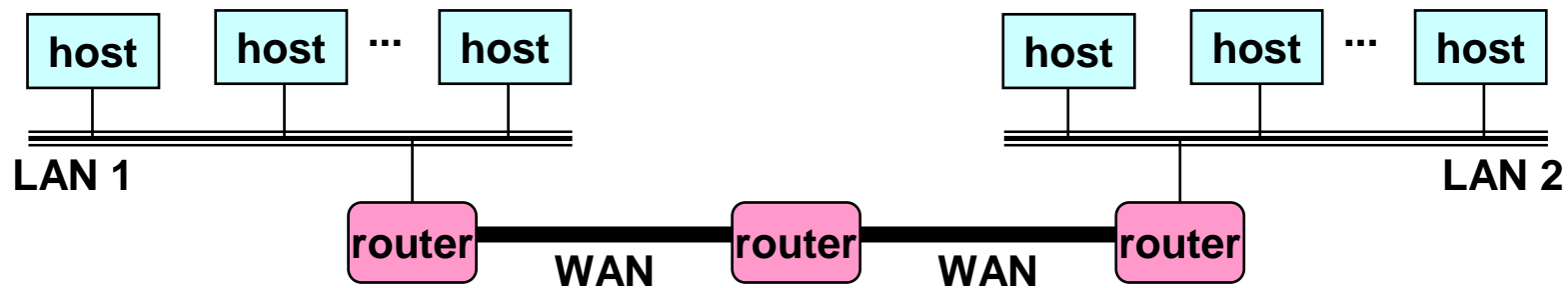


Network technology

What is an Internetwork?

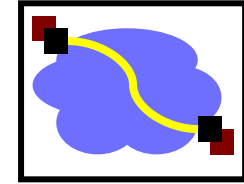


- Multiple incompatible LANs can be physically connected by specialized computers called *routers*
- The connected networks are called an *internetwork*
 - The “*Internet*” is one (very big & successful) example of an internetwork



LAN 1 and LAN 2 might be completely different, totally incompatible LANs (e.g., Ethernet and ATM)

Designing an Internetwork



- How do I designate a distant host?
 - Addressing / naming
- How do I send information to a distant host?
 - Underlying service model
 - What gets sent?
 - How fast will it go?
 - What happens if it doesn't get there?
 - Routing
- Challenges
 - Heterogeneity
 - Assembly from variety of different networks
 - Scalability
 - Ensure ability to grow to worldwide scale